



CMC60F

TECHNICAL DATA SPECSHEET





AERIAL | STANDARD

- 60 ft Working height
- Up to 37' lateral reach
- Single section lower boom (pantograph)
- Triple telescopic upper boom
- 90° Independently articulating jib
- 356° non-continuous boom rotation



OUTRIGGERS | STANDARD

- Bubble level
- Inclinometer



CHASSIS | STANDARD

- Live hydraulic boom controls on the chassis and in the basket
- Remote connection kit (All Access can connect to machine remotely if unsecured WiFi is shared with machine)
- Wired remote control for track drive
- Automatic leveling



TRACKS | STANDARD

- Black rubber tracks (set)
- Vertically and horizontally manual adjustable tracks
- Ability to raise basket & jib up out of the way while driving the tracks
- Double travel speed



POWER | STANDARD

- Honda iGX390 gasoline engine (replaces the Honda gasoline engine GX390) air-cooled 4-stroke OHV, 11.7 HP @3,600 rpm
- 120V Battery charger



PLATFORM | STANDARD

- Removable two man aluminum basket with rounded outer corners for better versatility. Size is 55" long x 27.5" wide x 43.3" high. Optional: single man basket (31.5" L x 23.6" W x 43.3" H) in lieu of the two man basket at no charge.
- High pressure air/water hoses routed internally from the ground to the basket - 2900PSI
- "Dead-man" safety foot-pedal
- Basket rotation +/- 90°



OTHER | STANDARD

- 1 & 3 years warranty. 1 yr "bumper to bumper" and 3 yrs on certain components. Unlimited use hours.
- Detailed owners maintenance and use manual, including parts and service diagrams
- One (1) Fall arrest safety harness
- Four (4) specially designed sliding outrigger pads





CHASSIS | OPTIONAL

- Wireless remote controls
- Travel alarm
- Warning light
- 1 Custom paint color: Choice of more than 200 colors. *No fluorescent or metallic colors*
- 2 Custom paint colors: Choice of more than 200 colors. *No fluorescent or metallic colors*



TRACKS | OPTIONAL

- Non-marking grey tracks (replaces the standard black tracks)
- Track socks



POWER | OPTIONAL

- Yanmar Diesel Engine L100N6CF1T1AA (replaces the Honda gasoline engine iGX390)
- Full lithium battery power (160A 48V) with built in electric charger (replaces Honda gasoline engine)
- Hybrid: Honda gas engine + 160ah lithium batteries
- 12V Battery backup electric pump (intermittently use the 12V battery to operate all functions)
- 120V Auxiliary electric motor w/ battery charger



PLATFORM | OPTIONAL

- 120V Electric outlet in basket with extension cord through the booms
- Removable single man made in USA 24" x 24" fiberglass basket equipped with basket quick connect bracket, replacing the standard basket
- Removable two-man made in USA 24" x 48" fiberglass basket equipped with basket quick connect bracket, replacing the standard basket
- Additional basket: Removable single man aluminum basket 31.5" L x 23.6" W x 43.3" H (this is in addition to the standard two man aluminum basket) basket support with wheels for easy handling is included
- Additional basket: Removable single man fiberglass basket 31.5" L x 23.6" W x 43.3" H (this is in addition to the standard two man aluminum basket) basket support with wheels for easy handling is included.
- Additional basket: Removable two man fiberglass basket 47.2" L x 23.6" W x 43.3" H (this is in addition to the standard two man aluminum basket) basket support with wheels for easy handling is included



OTHER | OPTIONAL

- Biodegradable hydraulic fluid (non-toxic, natural fluid. For extreme cold or sensitive locations)
- Ratchet straps (each. 4 are already included)
- Additional fall arrest aerial lift harness and lanyard kit including storage bag
- Automatic Self-Leveling with Radio Remote Control
- Set of 4 cavity outrigger pads

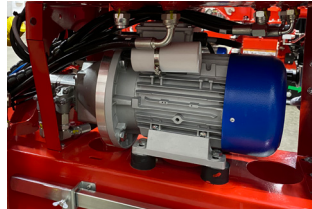
LITHIUM ION BATTERIES



NON-MARKING TRACKS



PLUG-IN ELECTRIC MOTOR



CUSTOM PAINT COLORS





TECHNICAL SPECIFICATIONS

PERFORMANCE

| | |
|--|--------------|
| Maximum working height | 60' |
| Maximum side reach with 507 lbs | 28' 5" |
| Maximum side reach with 176 lbs. | 36' 6" |
| Maximum basket capacity with standard basket | 507 lbs |
| Moveable Jib articulating range | 90° |
| Turret rotation range | +/-356° |
| Maximum slope to stabilize (deployment) | 17° (31%) |
| Height / Width tracks adjustment | 31" - 46" |
| Maximum slope approach angle / slope | 28° (53%) |
| Gradeability -- max. travel angle / slope* | 18° (32%) |
| Maximum crawler travel speed** | 0 - 2.2 ft/s |

DIMENSIONS

| | |
|---|----------|
| Basket height (basket is removable, variations available) | 43" |
| Basket width | 27" |
| Basket length | 48" |
| Total length | 17' 5" |
| Length without basket | 15' |
| Height in transport position | 76" |
| Height in transport position (with tracks extended) | 90" |
| Total width (without basket, tracks in) | 32" |
| Total width (without basket, tracks extended) | 41" |
| Free height from the ground | 12" |
| Tracks (LxW) | 62" x 7" |
| Outrigger spread length | 12' 3" |
| Outrigger spread width | 10' 2" |
| Outrigger foot diameter | 7" |

WEIGHT

| | |
|---|--------------------------|
| Total weight | 5,500 lbs |
| Max. pressure on the foot | 78.23 lb/in ² |
| Max. pressure on the track | 3.27 lb/in ² |
| Max. pressure in travel | 66.97 lb/ft ² |
| Max. pressure in work (4 outriggers deployed) | 41.37 lb/ft ² |

POWER

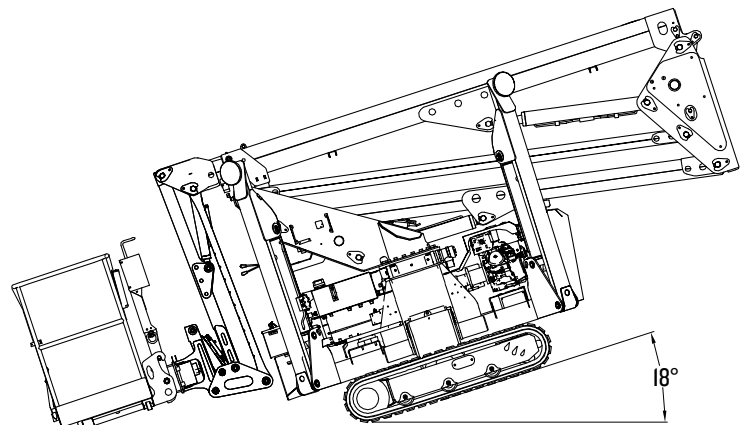
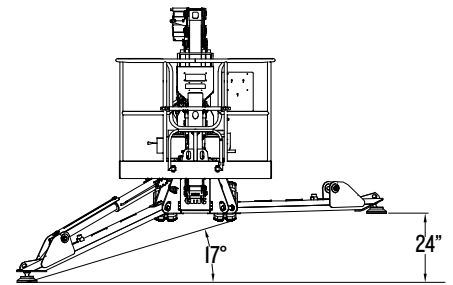
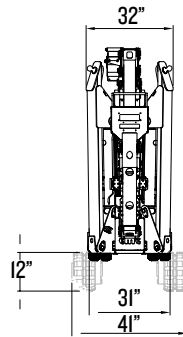
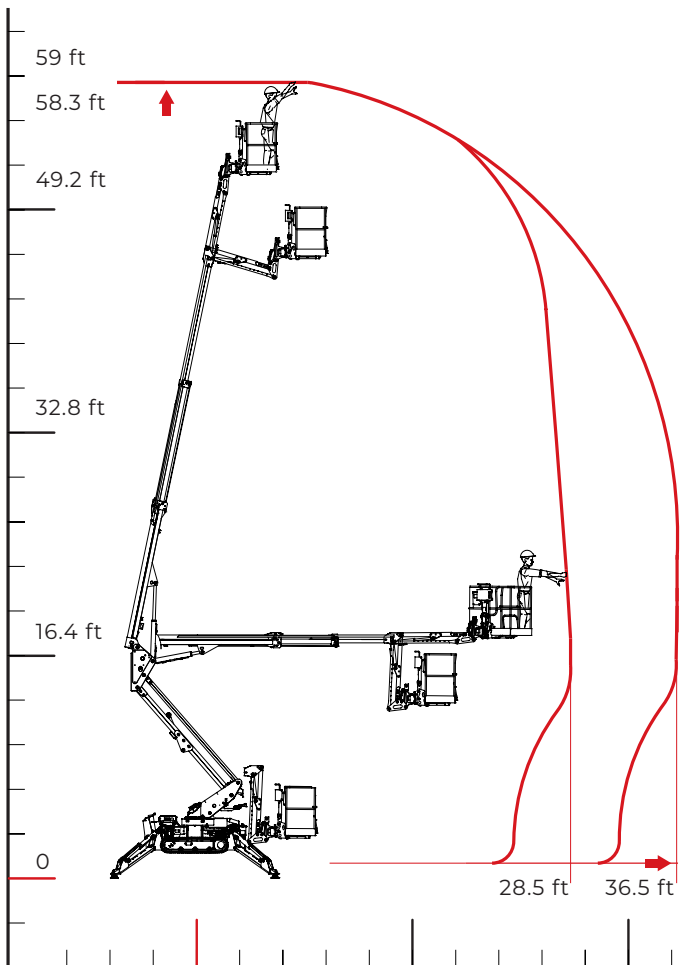
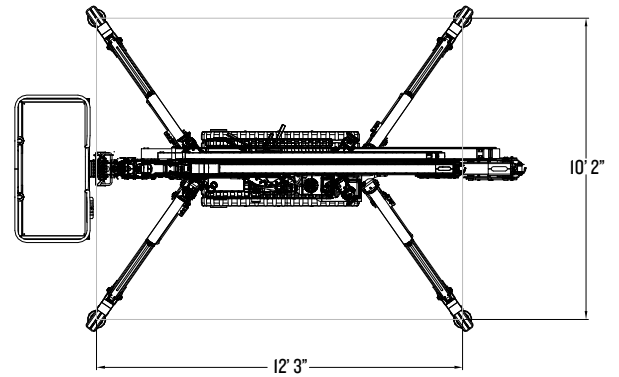
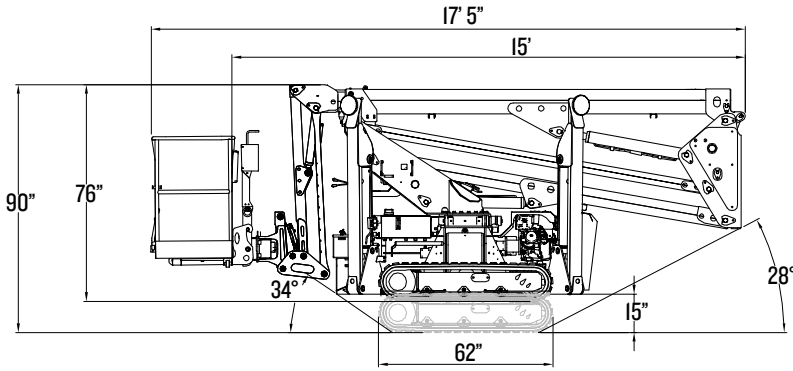
| | |
|-------------------------------|---------|
| Honda iGX390 gas engine | 11.6 HP |
|-------------------------------|---------|

*Technical specifications are non-binding, in some cases are approximate, and are subject to change.



DIAGRAMS

*Measurements are in feet and inches



*Technical specifications are non-binding, in some cases are approximate, and are subject to change.